

RETRA790 WOMEN'S FLUX SOFTSHELL BODYWARMER **Outlet**REGATTA
PROFESSIONAL

SOFTSHELL

WATERREPELLENT



POPIS

270 g/m²

Fabric Information

Warm backed woven stretch Softshell fabric

Wind resistant

Durable water repellent finish

Super soft handle

Quick drying fabric

Special Features

2 zipped lower pockets and 1 zipped chest pocket

Shaped fit

Colour shade differences may occur in Oxford Blue products

Suggested Decoration:

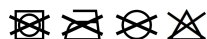
Embroidery, Heat transfer, Screen printing

Krajina pôvodu:

China

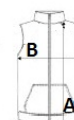


Wash dark colours separately



ROZMERY (CM)

	S	M	L	XL	2XL	3XL
Ks./	16	16	16	16	16	16
Dĺžka (A)	61	64	64	66	66	66
Šírka cez prsia (B)	46	48	51	53	56	58



FARBY:

 Classic Red
 Marl Grey/Black
 Oxford Blue