

RETRA549A-EX NAVIGATE HYBRID JACKET **Outlet**
REGATTA
 PROFESSIONAL

THERMO GUARD

EXTOL STRETCH

GŁÓWNE CECHY**Fabric Information**

Polyamide Body Panels

90% Polyester

10% Elastane Power Stretch

Special Features

Polyamide panels to the body

Lightweight recycled warmloft fill

Durable WR finish

Power stretch hood, sleeves and side of the body provides comfort and ease of movement

Ideal for decoration with strategically placed baffles

Running in 5 colours as part of our new Navigate range

2 lower front zipped pockets

Zipped chest pocket

Sugerowana znakowania:

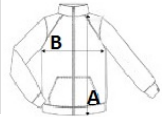
Prasa termiczna, Sitodruk

Kraj pochodzenia:

Myanmar

**SPECYFIKACJA ROZMIARU (CM)**

	S	M	L	XL	2XL	3XL
Szt./📦	8	8	8	8	8	8
Długość całkowita (A)	68,5	71	73,5	73,5	76	78,5
Szerokość klatki piersiowej (B)	50	54	58	62	67	75

**KOLORY:**
 Black/Classic Red
 Black/New Royal
 Black/Seal Grey
 Navy/French Blue
 Navy/Seal Grey