

SO02103 SOL'S BRODY WOMEN - HERRINGBONE SHIRT



MAIN FEATURES

- 125 g/m²
- Quality
- 82% cotton - 18% polyester
- Yarn-dyed
- Style
- Close-fitting cut
- Long sleeves
- Classic collar
- 1-button round cuffs
- 7-button placket
- Buttoned bound slits
- Chest and back darts
- Textured fabric
- Suggested Decoration:
- Digital printing (DTF), Embroidery, Flex, Heat transfer, Screen printing
- Country Of Origin:
- Bangladesh



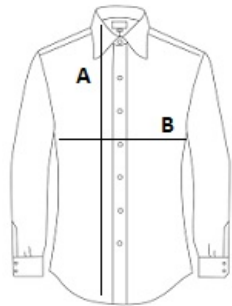
2025: p. 130

2024: p. 330



SIZE SPECIFICATION (CM)

	XS	S	M	L	XL	2XL
Pcs./📦	20	20	20	20	20	20
Body Length (A)	67	68	69	70	71	72
Chest Width (B)	44.50	46.50	48.50	50.50	53	56



COLORS:

- ☒ Sky Blue
- ☐ White