

SO02102 SOL'S BRODY MEN - HERRINGBONE SHIRT



MAIN FEATURES

- 125 g/m²
- Quality**
- 82% cotton - 18% polyester
- Yarn-dyed
- Style**
- Straight cut
- Small collar
- Long sleeves
- 2-button adjustable round cuffs
- 7-button placket
- Buttoned bound slits
- Textured fabric
- Suggested Decoration:**
- Digital printing (DTF), Embroidery, Flex, Heat transfer, Screen printing
- Country Of Origin:**
- Bangladesh



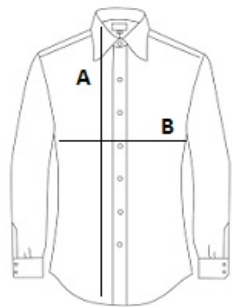
2025: p. 130

2024: p. 330



SIZE SPECIFICATION (CM)

	S	M	L	XL	2XL	3XL	4XL
Pcs./📦	20	20	20	20	20	20	20
Body Length (A)	77.50	78	78.50	79	79.50	80	80
Chest Width (B)	53.50	55.50	57.50	59.50	62	64	66



COLORS:

- ☒ Sky Blue ☐ White