

SD045 LUCY DENIM SHIRT

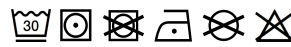


MAIN FEATURES

155 g/m²
 100% Cotton
 Standard fit
 No pockets for maximum embellishment area.
 Modern narrow collar
 Yoke at back shoulder
 Satin weave
 Button placket centre front fastening
 Turned hem with single needle stitch detail
 Single needle contrast at armholes collar and front placket
 2 button placket at cuff

Country Of Origin:

Bangladesh



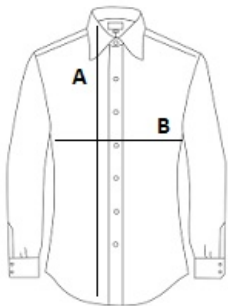
2025: p. 122

2024: p. 326



SIZE SPECIFICATION (CM)

	XS	S	M	L	XL
Pcs./📦	24	24	24	24	24
Body Length (A)	68	70.50	73	75.50	78
Chest Width (B)	45	49	53	57	61
Sleeve Length (C)	62	63	64	65	66



COLORS:

Black
 Dark Blue
 Light Blue