

RETRA650 HYDROFORCE - 3-LAYER MEMBRANE HOODED SOFTSHELL
REGATTA
 PROFESSIONAL

SOFTSHELL XPT

WATER REPELLENT

MAIN FEATURES300 g/m²**Fabric Information**

Warm backed woven Softshell XPT waterproof and breathable 3 layer membrane fabric

Textured ripstop shoulder panels

Wind resistant membrane fabric

Polyester mesh lining

ATL durable water repellent finish

Special Features

Inner zip guard

Foldaway wraparound lined hood with adjuster

Adjustable cuffs with rubber tabs

2 zipped lower and 1 chest pocket

Internal security pocket

Inner mobile phone pocket

Adjustable shockcord hem

Made using recycled materials

Suggested Decoration:

Heat transfer, Screen printing

Country Of Origin:

China

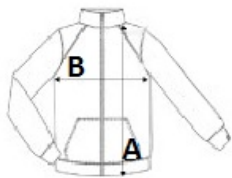


2025: p. 249

2024: p. 489

**SIZE SPECIFICATION (CM)**

	S	M	L	XL	2XL	3XL
Pcs./📦	16	16	16	16	16	16
Body Length (A)	68	70.50	73	73	75.50	75.50
Chest Width (B)	51	55	59	63	68	72
Sleeve Length (C)	78.75	80	81	82.50	84.50	86

**COLORS:**

Oxford Blue/Black

Seal Grey/Black

Classic Red/Black

Black/Black

Navy/Black