

RETRA613 WOMEN'S ABLAZE 3 LAYER PRINTABLE SOFTSHELL JACKET
REGATTA
 PROFESSIONAL

SOFTSHELL XPT

WATER REPELLENT

MAIN FEATURES300 g/m²**Fabric Information**

Warm backed woven Softshell XPT waterproof and breathable 3 layer membrane fabric

Wind resistant membrane fabric

AtI durable water repellent finish

Special Features

2 zipped lower pockets

Zipped chest pocket

Adjustable cuffs

Ideal for screen, transfer and vinyl printing

Suggested Decoration:

Digital printing (DTF), Embroidery, Flex, Screen printing

Country Of Origin:

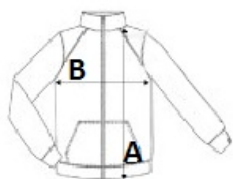
China



2024: p. 491

**SIZE SPECIFICATION (CM)**

	10	12	14	16	18	20
Pcs./	16	16	16	16	16	16
EU	S	M	L	XL	2XL	3XL
Body Length (A)	64.50	67	67	69.50	69.50	69.50
Chest Width (B)	48	51	53.50	56	59.75	62.25

**COLORS:**
 French Blue/Navy
 Navy/Navy
 Seal Grey/Black
 Black/Black