

PR317 WOMEN'S CROSS-DYE ROLL SLEEVE POPLIN BAR SHIRT **Outlet**



MAIN FEATURES

105 g/m<sup>2</sup>

**Fabric**

65% Polyester, 35% Cotton Poplin

105gsm

**Features**

Soft collar styling

Cross-dye textured fabric appearance

Roll-up sleeve option with button fastening on the upper arm

Bust and back darts

Curved hem

**Suggested Decoration:**

Embroidery, Heat transfer, Screen printing

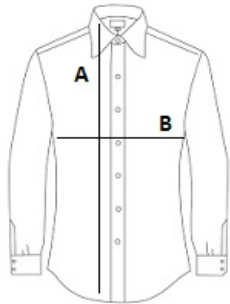
**Country Of Origin:**

Bangladesh



SIZE SPECIFICATION (CM)

	XS	S	M	L	XL	2XL	3XL
Pcs./📦	24	24	24	24	24	24	24
Body Length (A)	65	66	67	68	69	70	71
Chest Width (B)	46	48.50	51	53.50	56	58.50	61



COLORS:

 Grey Denim