

KA651 LADIES' HOODED SOFTSHELL LINED PARKA



KARIBAN

MAIN FEATURES

- 480 g/m²
- 95% polyester / 5% elastane
- Triple-layer bonded fabric
- Breathable up to 3000 gsm/24h and water-resistant up to 8000 mm
- Outer: 95 % polyester/5 % elastane
- Breathable membrane mid layer
- Inner layer: microfleece
- 100% polyester quilted lining
- Front: 4 zipped pockets (2 side, 1 sleeve, 1 right chest)
- 2 inner pockets with press stud
- Removable 3-panel hood, lined and quilted, adjustable with stoppers
- Adjustable cuff with tear release fastening
- 1 zip at chest and 1 zip at hem for decoration access

Country Of Origin:

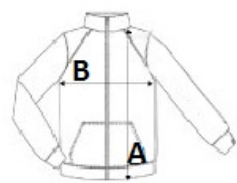
China

- 2025: p. 265
- 2024: p. 520



SIZE SPECIFICATION (CM)

	XS	S	M	L	XL	2XL
Pcs./📦	10	10	10	10	10	10
Body Length (A)	65	67	69	71	73	75
Chest Width (B)	46	49	52	55	58	61
Sleeve Length (C)	60	61	62	63	64	65



COLORS:

- Black
- Navy
- Titanium