

**AWJH005 GIRLIE LONGLINE HOODIE** **Outlet**

**JustHoods**  
ALWAYS

**MAIN FEATURES**

280 g/m<sup>2</sup>  
 80% Ringspun Cotton/20% Polyester  
 Girlie fit  
 Long length style  
 Twin needle stitching detailing  
 Three panel double fabric hood  
 Flatlace drawcords  
 Kangaroo pouch pocket with small hidden opening for earphone cord feed  
 Hidden ear phone loops  
 Long rib cuff  
 Deep rib hem  
 Ribbed main pocket edge detail for comfort  
 Simple tear out label makes it perfect for rebranding  
 Soft cotton faced fabric creates ideal printing surface  
 Worldwide Responsible Accredited Production (WRAP) certified production

**Suggested Decoration:**

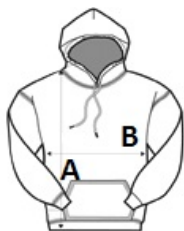
DTG, Embroidery, Heat transfer, Screen printing

**Country Of Origin:**

Pakistan

**SIZE SPECIFICATION (CM)**

	<b>XS</b>	<b>S</b>	<b>M</b>	<b>L</b>	<b>XL</b>
<b>Pcs./</b>	24	24	24	24	24
<b>Body Length (A)</b>	75	77	79	81	83
<b>Chest Width (B)</b>	43	46	49	52	55
<b>Sleeve Length (C)</b>	63	64	65	66	67

**COLORS:**

Heather Grey Jet Black