

WK450 UNISEX 3-LAYER TWO-TONE BIONIC SOFTSHELL JACKET**HAUPTEIGENSCHAFTEN**300 g/m²

96% polyester/4% elastane

3-layer bonded fabric breathable 3,000 g/m²/24 h and waterproof 5,000 mm

Outer: 96% polyester/4% elastane

Breathable and waterproof membrane mid layer

Inner layer: microfleece

BIONIC FINISH ® ECO treatment (fluorine-free waterproofing for optimal performance)

Plastic zip fastening with matching zip puller

2 zipped pockets with front zip puller

3-part hood adjustable using stoppers inserted in the seam

Contrasting inner taped neckline with hanging loop

Elasticated pen holder with 3 compartments on the left sleeve

Contrasting piping between the two-tone parts of the garment (body and sleeves, front and back)

2x2 ribbed cuffs and hem lined with elastane

Tear-away brand label

Ursprungsland:

Bangladesh

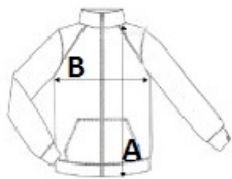


2025: s. 267

2024: s. 524

**GRÖSSENANGABE (CM)**

	S	M	L	XL	2XL	3XL	4XL	5XL
Stck./📦	10	10	10	10	10	10	10	10
Körperlänge	71	73	75	77	79	81	83	85
Brustweite (B)	52	55	58	61	64	67	70	73
Ärmellänge hinten Mitte (C)	67.50	68.50	69.50	70.50	71.50	72.50	73.50	74.50

**FARBEN:**

Black	Black/Dark Grey	Black/Forest Green	Black/Orange	Black/Red	Black/Yellow
Navy	Navy/Dark Grey	Navy/Royal Blue			