

**SO16020 SOL'S EMBASSY - LONG SLEEVE OXFORD WOMEN'S SHIRT**

**SOL'S**  
the fair spirit

**MAIN FEATURES**135 g/m<sup>2</sup>**Quality**

70% cotton - 30% polyester

**Style**

Fitted cut

Long sleeves

Classic collar

Adjustable rounded cuffs

7 tone-on-tone button placket

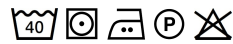
Chest darts

**Suggested Decoration:**

Digital printing (DTF), Embroidery, Flex, Heat transfer, Screen printing

**Certifications:****Country Of Origin:**

Bangladesh

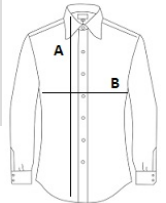


2025 : p. 131

2024 : p. 333

**SIZE SPECIFICATION (CM)**

	<b>XS</b>	<b>S</b>	<b>M</b>	<b>L</b>	<b>XL</b>	<b>2XL</b>
<b>Pcs./</b>	20	20	20	20	20	20
<b>Body Length (A)</b>	64	65	66	67	68	69
<b>Chest Width (B)</b>	45	48	51	54	57	60

**COLORS:**

☒ Sky Blue ☐ White