

SO01652 SOL'S TURBO - KNITTED FLEECE JACKET

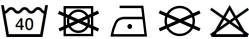


MAIN FEATURES

- 340 g/m²
- Quality**
 - 100% polyester
 - Brushed inside
- Style**
 - Unisex
 - Zip jacket, mouliné effect
 - 2 pockets
 - High collar
 - Contrast elasticated binding at cuffs and bottom
- Suggested Decoration:**
 - Embroidery, Flex, Heat transfer, Screen printing
- Certifications:**



Country Of Origin:
Bangladesh

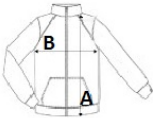


2024 : p. 504



SIZE SPECIFICATION (CM)

	XS	S	M	L	XL	2XL	3XL	4XL	5XL
Pcs./	20	20	20	20	20	20	20	20	20
Body Length (A)	68	69	70	71	72	73	74	0	0
Chest Width (B)	51	54	57	60	63	66	69	0	0



COLORS:

- Bugatti Blue/Navy
- Dark Grey/Black