

RETRF655 PRO HI VIS 250 FLEECE Outlet



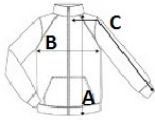
MAIN FEATURES

- 250 g/m²
- Fabric Information**
 - Polyester 100%
 - 250 series anti-pull Symmetry fleece
- Special Features**
 - EN ISO 20471:2013 +A1:2016 Class 2
 - 2 lower pockets
 - Adjustable drawcord hem
 - Centre front zip with inner chin guard
 - Orange colour-way also conforms to RIS-3279/TOM when worn with RIS-3279-TOM Class 2 upper body cloth
 - ID Reflection - Our angled chevrons allow people to know which way you are facing towards or away from
 - This product has no external logo branding
- Max 25 Washes**
- Suggested Decoration:**
 - Embroidery
- Country Of Origin:**
 - China



SIZE SPECIFICATION (CM)

	S	M	L	XL	2XL	3XL
Pcs./📦	16	16	16	16	16	16
Body Length (A)	66	68,5	71	71	73,5	73,5
Chest Width (B)	49	53	57	61	66	70
Sleeve Length (C)	62	63	64	65	66	67



COLORS:

Yellow/Navy