

RETRA820 CLASSIC - SOFTSHELL BODYWARMER


REGATTA
 PROFESSIONAL

SOFTSHELL STRETCHLIGHT

WATER REPELLENT

MAIN FEATURES

240 g/m²

Fabric Information

Lightweight jersey backed Softshell fabric

Softshell Stretch Light fabric technology

Durable water repellent finish

Wind resistant

Super soft handle

Quick drying

Lightweight and easy to wear

Special Features

2 zipped lower pockets

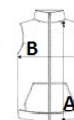
Country Of Origin:

China



SIZE SPECIFICATION (CM)

	S	M	L	XL	2XL	3XL
Pcs./	16	16	16	16	16	16
Body Length (A)	63.50	66	66	68.50	68.50	71
Chest Width (B)	46.50	50.50	54.50	58.50	62.50	67.50



COLORS:

Black

Navy