

RETRA728 ECO ABLAZE SOFTSHELL JACKET **Outlet**
REGATTA
 PROFESSIONAL

SOFTSHELL

MAIN FEATURES270 g/m²**Fabric Information**

Polyester 100%

Warm backed woven Softshell

Outer fabric contains recycled polyester yarns

Printable Softshell fabric

Ideal for screen, transfer and vinyl printing

Special Features

Inner zip guard

This product has no external logo branding

Suggested Decoration:

Embroidery, Heat transfer, Screen printing

Country Of Origin:

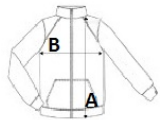
China



2024 : p. 122

**SIZE SPECIFICATION (CM)**

	XS	S	M	L	XL	2XL	3XL	4XL
Pcs./	16	16	16	16	16	16	16	16
Body Length (A)	68	68	70,5	73	73	75,5	75,5	78
Chest Width (B)	47	51	55	59	63	68	72	76
Sleeve Length (C)	65	66	67	68	69	70	71	72

**COLORS:**
Black/Black
French Blue/Navy
Navy/French Blue
Navy/Navy
Seal Grey/Black