

RETRA680 CLASSIC PRINTABLE LIGHTWEIGHT SOFTSHELL



REGATTA
PROFESSIONAL

SOFTSHELL

WATERREPELLENT

MAIN FEATURES

240 g/m²

Fabric Information

- Lightweight jersey backed Softshell fabric
- Softshell Stretch Light fabric technology
- Durable water repellent finish
- Wind resistant
- Super soft handle
- Quick drying
- Lightweight and easy to wear

Special Features

- 2 zipped lower pockets
- Made using recycled materials

Suggested Decoration:

Heat transfer, Screen printing

Country Of Origin:

China



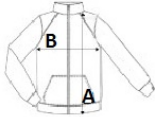
2025 : p. 248

2024 : p. 494



SIZE SPECIFICATION (CM)

	S	M	L	XL	2XL	3XL
Pcs./📦	16	16	16	16	16	16
Body Length (A)	66	68.50	71	71	73.50	73.50
Chest Width (B)	50.50	54.50	58.50	62.50	67.50	71.50
Sleeve Length (C)	64	65	66	67	68	69



COLORS:

- Oxford Blue/Oxford Blue
- Seal Grey/Seal Grey
- Black/Black
- Navy/Navy