

RETRA625 HI-VIS PRO 3 LAYER SOFTSHELL



REGATTA  
PROFESSIONAL

HIGH VISIBILITY



SOFTSHELL XPT

WATER REPELLENT

MAIN FEATURES

310 g/m<sup>2</sup>

Fabric Information

Warm backed woven Softshell XPT waterproof and breathable 3 layer membrane fabric  
Breathability rating 10,000g/m<sup>2</sup>/24 hours

Special Features

- EN ISO 20471:2013/A1:2016 Class 2
- 2 zipped lower pockets
- Adjustable shockcord hem
- Full length zip with inner zip and chin guard
- 1 chest pocket
- Orange colour-way also conforms to RIS-3279/TOM
- ID Reflection - Our angled chevrons allow people to know which way you are facing towards or away from them at a quick glance, increasing safety in low light
- This product has no external logo branding
- Made using recycled materials

Suggested Decoration:

Embroidery, Heat transfer, Screen printing

Country Of Origin:

China



Wash dark colours separately



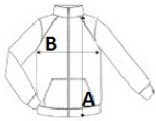
2025 : p. 252

2024 : p. 495



SIZE SPECIFICATION (CM)

|                   | S  | M     | L  | XL | 2XL   | 3XL   |
|-------------------|----|-------|----|----|-------|-------|
| Pcs./             | 16 | 16    | 16 | 16 | 16    | 16    |
| Body Length (A)   | 68 | 70.50 | 73 | 73 | 75.50 | 75.50 |
| Chest Width (B)   | 51 | 55    | 59 | 63 | 68    | 72    |
| Sleeve Length (C) | 66 | 67    | 68 | 69 | 70    | 71    |



COLORS:

Orange/Navy      Yellow/Navy