

RETRA549 NAVIGATE HYBRID JACKET


REGATTA
 PROFESSIONAL

WARMLOFT

MAIN FEATURES

Fabric Information

Polyamide Body Panels

90% Polyester

10% Elastane Power Stretch

Special Features

Polyamide panels to the body

Lightweight recycled warmloft fill

Durable WR finish

Power stretch hood, sleeves and side of the body provides comfort and ease of movement

Ideal for decoration with strategically placed baffles

Running in 5 colours as part of our new Navigate range

2 lower front zippered pockets

Zippered chest pocket

Suggested Decoration:

Heat transfer, Screen printing

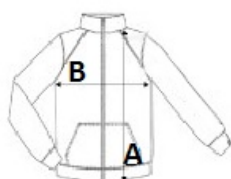
Country Of Origin:

Burma



SIZE SPECIFICATION (CM)

| | S | M | L | XL | 2XL | 3XL |
|-----------------|------|----|------|------|-----|------|
| Pcs./📦 | 8 | 8 | 8 | 8 | 8 | 8 |
| Body Length (A) | 68,5 | 71 | 73,5 | 73,5 | 76 | 78,5 |
| Chest Width (B) | 50 | 54 | 58 | 62 | 67 | 75 |



COLORS:

| | | | | | | | | | | | |
|--|-------------------|--|------------------|--|-----------------|--|------------------|--|-----------------|--|------------------|
| | Black/Classic Red | | Black/Lime Green | | Black/New Royal | | Black/Orange Pop | | Black/Seal Grey | | Navy/French Blue |
| | Navy/Seal Grey | | | | | | | | | | |