

**RETRA524** WOMEN'S X-PRO ICEFALL III PERFORMANCE INSULATED SEAMLESS QUILT JACKET**Outlet****REGATTA**  
PROFESSIONAL

HYDRAFORT 5000

SYMMETRY

**MAIN FEATURES**160 g/m<sup>2</sup>**Fabric Information**

100% Polyester water repellent quilted micro poplin fabric

Welded seam detail

Highly windproof

Warmloft performance technology insulation

**Special Features**

Insulated grown on hood

Stretch binding to hood opening, cuffs and hem

2 zipped lower pockets

Easily compressible

**Suggested Decoration:**

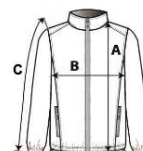
Embroidery, Heat transfer, Screen printing

**Country Of Origin:**

China

**SIZE SPECIFICATION (CM)**

	S	M	L	XL	2XL	3XL
<b>Pcs./</b>	8	8	8	8	8	8
<b>Body Length (A)</b>	68	68	70,5	70,5	73	73
<b>Chest Width (B)</b>	51	53	55,5	58	62	64
<b>Sleeve Length (C)</b>	65	65,5	66	66,5	67	67,5

**COLORS:**
 Black