

PR696 WOMEN'S KNITTED V-NECK SWEATER



MAIN FEATURES

- Fabric**  
55% Cotton, 45% Acrylic  
12 Gauge Knit
- Features**  
V-neck styling  
Fine gauge knit  
Ribbed knit cuffs and hem  
Easy care
- Suggested Decoration:**  
Embroidery, Heat transfer
- Certifications:**



**Country Of Origin:**  
Bangladesh

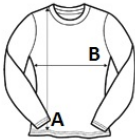


2025 : p. 103  
2024 : p. 293



SIZE SPECIFICATION (CM)

	XS	S	M	L	XL	2XL	3XL	4XL	5XL
Pcs./	12	12	12	12	12	12	12	12	12
Body Length (A)	59	60	61	62	63	64	65	66	67
Chest Width (B)	46	48	50	52	54	56.50	59	61.50	64



COLORS:

- Black
- Charcoal
- Navy