

PR683 'BLOSSOM' BEAUTY AND SPA TUNIC

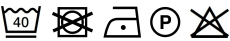


MAIN FEATURES

- 185 g/m<sup>2</sup>
- Fabric**
- 100% Polyester plain weave
- 185gsm
- Features**
- Beauty and Spa tunic with feature button front fastening with concealed zip
- Mandarin collar
- Short sleeve
- Princess seams
- Side vents
- Back pleat for ease of movement
- Easycare
- Certifications:**



Country Of Origin:  
China

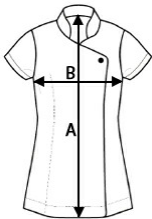


2025 : p. 154



SIZE SPECIFICATION (CM)

	XS	S	M	L	XL	2XL
Pcs./📦	12	12	12	12	12	12
Body Length (A)	71	72	72	73	74	75
Chest Width (B)	47	49.50	52	54.50	57	60



COLORS:

☐ White