

PR605 'DAISY' HEALTHCARE TUNIC Outlet



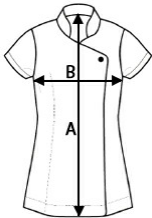
MAIN FEATURES

- 195 g/m<sup>2</sup>
- Fabric**
- 65% Polyester, 35% Cotton Twill
- 195gsm
- Features**
- V-Neck with contrast trims
  - Covered front zip fastening
  - Covered popper fastening above zip
  - Side and back pleats for fitted styling
  - Curved side pockets with contrast piped edge
- Suggested Decoration:**
- Embroidery, Heat transfer, Screen printing
- Country Of Origin:**
- Bangladesh



SIZE SPECIFICATION (CM)

	XS	S	M	L	XL	2XL	3XL	4XL	5XL
Pcs./	24	24	24	24	24	24	24	24	24
Body Length (A)	78	78.50	79	79.50	80	80.50	81	81.50	82
Chest Width (B)	45.50	48	50.50	53	55.50	58.50	61.50	64.50	67.50



COLORS:

- Lilac/White
- White/Navy