

PR344 WOMEN'S STRETCH-FIT COTTON POPLIN LONG SLEEVE SHIRT



MAIN FEATURES

- 115 g/m<sup>2</sup>
- Fabric**
- 97% Cotton, 3% Elastane Poplin
- 115gsm
- Features**
- Soft feel and stretch fabric
- Bust and back darts
- Seamless placket
- Curved hem
- Two-button adjustable cuff
- Modern fit
- Suggested Decoration:**
- Embroidery, Heat transfer, Screen printing
- Certifications:**



**Country Of Origin:**  
Bangladesh

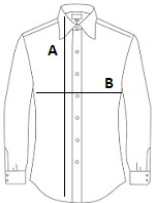


2025 : p. 94  
2024 : p. 275



SIZE SPECIFICATION (CM)

	XS	S	M	L	XL	2XL	3XL
Pcs./	24	24	24	24	24	24	24
Body Length (A)	65	66	67	68	69	70	71
Chest Width (B)	46.50	49	51.50	54	56.50	59	62



COLORS:

- ☒ Pale Blue ☒ Black ☐ White