

PR317 WOMEN'S CROSS-DYE ROLL SLEEVE POPLIN BAR SHIRT Outlet



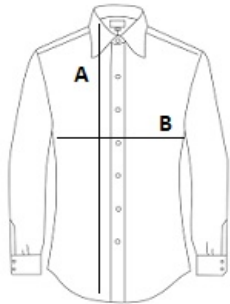
MAIN FEATURES

- 105 g/m²
- Fabric**
- 65% Polyester, 35% Cotton Poplin
- 105gsm
- Features**
- Soft collar styling
- Cross-dye textured fabric appearance
- Roll-up sleeve option with button fastening on the upper arm
- Bust and back darts
- Curved hem
- Suggested Decoration:**
- Embroidery, Heat transfer, Screen printing
- Country Of Origin:**
- Bangladesh



SIZE SPECIFICATION (CM)

| | XS | S | M | L | XL | 2XL | 3XL |
|-----------------|----|-------|----|-------|----|-------|-----|
| Pcs./📦 | 24 | 24 | 24 | 24 | 24 | 24 | 24 |
| Body Length (A) | 65 | 66 | 67 | 68 | 69 | 70 | 71 |
| Chest Width (B) | 46 | 48.50 | 51 | 53.50 | 56 | 58.50 | 61 |



COLORS:

■ Grey Denim