

PR217 MEN'S CROSS-DYE ROLL SLEEVE POPLIN BAR SHIRT **Outlet****MAIN FEATURES**105 g/m²**Fabric**

65% Polyester, 35% Cotton Plain Weave

105gsm

Features

Soft collar styling

Cross dye textured fabric appearance

Roll-up sleeve option with button fastening on the upper arm

Suggested Decoration:

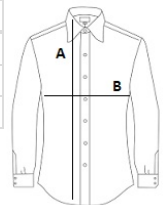
Embroidery, Heat transfer, Screen printing

Certifications:**Country Of Origin:**

Bangladesh

**SIZE SPECIFICATION (CM)**

	XS	S
Pcs./	24	24
Body Length (A)	79	79
Chest Width (B)	50	52

**COLORS:**
 Grey Denim
 Indigo Denim