

PR204 MEN'S LONG SLEEVE FITTED POPLIN SHIRT **Outlet**



MAIN FEATURES

- 105 g/m²
- Fabric**
- 65% Polyester, 35% Cotton Poplin
- 105gsm
- Features**
- Fitted shape
- Stiffened formal cut collar
- Separate pocket supplied for attachment if required
- Long sleeves with button fastened cuffs
- Cuffs will also fit cufflinks
- Easy care
- Slim fit
- Suggested Decoration:**
- Embroidery, Heat transfer, Screen printing
- Certifications:**



Country Of Origin:
Bangladesh

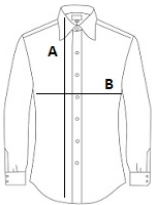


2024 : p. 274



SIZE SPECIFICATION (CM)

	S/M	M	M/L
Pcs./	36	36	36
Body Length (A)	77	78	78
Chest Width (B)	53.50	56	58.50
Neckline length	38	39.50	41



COLORS:

Royal