

NS5005 LADIES' ECO-FRIENDLY HOODED SWEATSHIRT DRESS



native spirit

MAIN FEATURES

- 300 g/m²
 - 65% organic cotton / 35% recycled polyester
 - Ringspun combed cotton
 - Regular fit with dropped shoulders
 - 3-ply brushed fleece
 - 1/2 circle in the back
 - Enzyme-washed
 - Hood lined with main material
 - Flat drawstrings with recycled metal tips
 - Two minimalist pockets
 - 1x1 rib bottom hem and cuffs
- Suggested Decoration:**
- Digital printing (DTF), Embroidery, Heat transfer, Screen printing
- Certifications:**



Country Of Origin:
Bangladesh

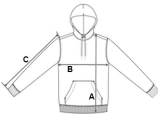


2025 : p. 208



SIZE SPECIFICATION (CM)

	XS	S	M	L	XL
Pcs./	15	15	15	15	15
Body Length (A)	86	88	90	92	94
Chest Width (B)	55	58	61	64	67
Sleeve Length (C)	49	50	51	52	53



COLORS:

- Aquamarine
- Black
- Ivory