

LE951 WOMEN'S V-NECK FINE GAUGE COTTON PULLOVER **New**

LEGEND®
CLASSICS

MAIN FEATURES

290 g/m²

100% Cotton V-Neck Pullover

Soft 12-gauge cotton yarn for all-day comfort

Fully-fashioned: knitted to shape for a perfect fit

Pre-washed for improved size stability, machine washable

Ribbed cuffs and hem with added stretch nylon yarn for durability

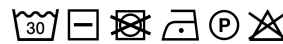
Double-layered neck rib for extra comfort and shape retention

Tear-away label for easier personalization

Oeko-Tex Standard 100 certified for responsible manufacturing

Certifications:**Country Of Origin:**

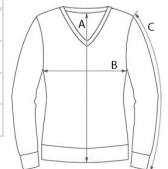
China



2025 : p. 125

**SIZE SPECIFICATION (CM)**

	XS	S	M	L	XL	2XL	3XL
Pcs./	24	24	24	24	24	24	12
Body Length (A)	0	60	61	62	63	64	65
Chest Width (B)	0	44	47	50	53	56	59
Sleeve Length (C)	0	60.50	61.50	62.50	63.50	64.50	65.50

**COLORS:**