

LE901 WOMEN'S CREW NECK FINE GAUGE COTTON PULLOVER **New**



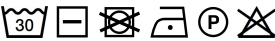
LEGEND®
CLASSICS

MAIN FEATURES

- 290 g/m²
- 100% Cotton Crew Neck Pullover
- Soft 12-gauge cotton yarn for all-day comfort
- Fully-fashioned:** knitted to shape for a perfect fit
- Pre-washed for improved size stability, machine washable
- Ribbed cuffs and hem with added stretch nylon yarn for durability
- Double-layered neck rib for extra comfort and shape retention
- Tear-away label for easier personalization
- Oeko-Tex Standard 100** certified for responsible manufacturing
- Certifications:**



Country Of Origin:
China

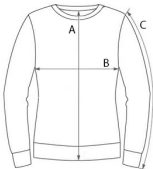


2025 : p. 124



SIZE SPECIFICATION (CM)

	XS	S	M	L	XL	2XL	3XL
Pcs./	24	24	24	24	24	24	12
Body Length (A)	59	60	61.50	63	64.50	66	67.50
Chest Width (B)	42	45	48	51	54	57	60
Sleeve Length (C)	59.50	60.50	61.50	62.50	63.50	64.50	65.50



COLORS:

- Black
- Bordeaux
- Deep Blue
- Light Melange Grey
- Navy
- Sand