

KA693 FACTORY - DETACHABLE-SLEEVED BLOUSON JACKET



KARIBAN

MAIN FEATURES

- 475 g/m<sup>2</sup>
- 100% polyester outer with PVC coating
- Polyester padding and lining
- Cuff adjusters with tear release fastening
- Concealed hood with elasticated drawcord and zip access
- 2 inner pockets and 1 mobile phone pocket
- Inner zip access for decoration
- Detachable sleeves
- 2 side pockets with piping
- Elasticated drawcord with toggles at hem

Suggested Decoration:

Embroidery

Certifications:



STANDARD 100

Country Of Origin:

China



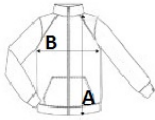
2025 : p. 347

2024 : p. 623



SIZE SPECIFICATION (CM)

	S	M	L	XL	2XL	3XL
Pcs./	10	10	10	10	10	10
Body Length (A)	77.45	79.45	81.50	83.50	85.50	88.30
Chest Width (B)	58.80	61.50	64.50	67.50	70.50	74.50
Sleeve Length (C)	66.90	68.80	70.90	72.90	74.90	77.10



COLORS:

- Dark Grey
- Black
- Navy