

**KA656** PARKA WITH REMOVABLE HOOD

# KARIBAN

## MAIN FEATURES

230 g/m<sup>2</sup>

Outer: 100% polyester pongee - 230 gsm

Inner padding: 100% polyester - 135 gsm

Dual-fabric inner: 180 gsm microfleece on upper body and quilted 210T 60 gsm polyester lining on hem

Satin finish outer

2 zipped pockets on the side and 1 zipped pocket on the front

2 inner pockets

Ribbed inner collar and fleece-lined removable hood

Two-way zip fastening with flap

Cuff with inner rib

Two-tone decorative inner band

1 zip at chest and 1 zip at hem for decoration access

### Country Of Origin:

China



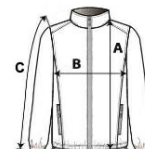
2025 : p. 346

2024 : p. 622



## SIZE SPECIFICATION (CM)

	S	M	L	XL	2XL	3XL	4XL
<b>Pcs./</b>	10	10	10	10	10	10	10
<b>Body Length (A)</b>	84	86	88	90	92	94.75	96.75
<b>Chest Width (B)</b>	58	61	64	67	70	74	77
<b>Sleeve Length (C)</b>	67	69	71	73	75	77.75	79.75



## COLORS:

Black