

KA651 LADIES' HOODED SOFTSHELL LINED PARKA

KARIBAN

MAIN FEATURES

480 g/m²
 95% polyester / 5% elastane
 Triple-layer bonded fabric
 Breathable up to 3000 gsm/24h and water-resistant up to 8000 mm
 Outer: 95 % polyester/5 % elastane
 Breathable membrane mid layer
 Inner layer: microfleece
 100% polyester quilted lining
 Front: 4 zipped pockets (2 side, 1 sleeve, 1 right chest)
 2 inner pockets with press stud
 Removable 3-panel hood, lined and quilted, adjustable with stoppers
 Adjustable cuff with tear release fastening
 1 zip at chest and 1 zip at hem for decoration access

Certifications:



STANDARD
100

Country Of Origin:

China



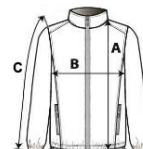
2025 : p. 265

2024 : p. 520



SIZE SPECIFICATION (CM)

| | XS | S | M | L | XL | 2XL |
|--------------------------|----|----|----|----|----|-----|
| Pcs./ | 10 | 10 | 10 | 10 | 10 | 10 |
| Body Length (A) | 65 | 67 | 69 | 71 | 73 | 75 |
| Chest Width (B) | 46 | 49 | 52 | 55 | 58 | 61 |
| Sleeve Length (C) | 60 | 61 | 62 | 63 | 64 | 65 |



COLORS:

Black Navy Titanium