

KA6171 MEN'S BI-MATERIAL PADDED JACKET New



KARIBAN

MAIN FEATURES

- 70 g/m²
- Fabric sides, back, undersleeves and part of the neckline: 94% polyester / 6% elastane
- Fabric upper sleeves, front and back: 100% polyester pongee 300T with polyurethane coating
- 100% polyester (120g) padding
- Lined with 100% polyester taffeta 230T
- Padded section on front body and third of back
- Front fastening with reverse nylon zip
- 2 side pockets and front piping
- Chest patch pocket on the left-hand side with reverse zip fastening
- Bi-material yokes at the neckline
- Elasticated bias finish on the cuffs and bottom hem

Certifications:

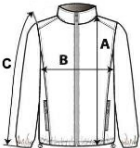


Country Of Origin:
Bangladesh



SIZE SPECIFICATION (CM)

	S	M	L	XL	2XL	3XL
Pcs./📦	10	10	10	10	10	10
Body Length (A)	69	71	73	75	77	79
Chest Width (B)	52	55	58	61	64	67
Sleeve Length (C)	65.50	66.50	67.50	68.50	69.50	70.50



COLORS:

 Black/Dark Grey
Heather