

KA595 MEN LONG-SLEEVED EASY CARE SHIRT WITHOUT POCKET

KARIBAN

MAIN FEATURES

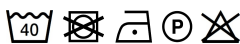
- 125 g/m²
- 70% cotton / 30% polyester
- Oxford fabric
- Straight fit
- Easy care (Easy care treatment)
- Collar with stays
- Placket with buttons in tone-on-tone plastic
- Upper back panel
- Adjustable cuffs with two buttons and rounded corners, and a pointed tab end with button
- Rounded bottom hem with single overstitch finish
- No brand label on the collar, only a size tag for easy decoration

Certifications:



Country Of Origin:

Bangladesh



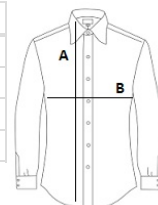
2025 : p. 108

2024 : p. 307



SIZE SPECIFICATION (CM)

	S	M	L	XL	2XL	3XL	4XL
Pcs./	25	25	25	25	25	25	25
Body Length (A)	73.50	75.50	77.50	79.50	81.50	83.50	85.50
Chest Width (B)	52	55	58	61	64	67	70
Sleeve Length (C)	64.50	65.50	66.50	67.50	68.50	69.50	70.50



COLORS:

☒ Oxford Blue ☐ White