

## KA590 MEN'S LONG-SLEEVED SAFARI SHIRT



## KARIBAN

## MAIN FEATURES

120 g/m<sup>2</sup>

100% cotton

Poplin fabric

Non-buttoned collar

2 patch pockets with front flap

Adjustable cuffs with button pointed tab end

Roll-up sleeves with button tab

Shirt washed

This product has been specially treated and appears intentionally aged

This manufacturing process results in colour variations between products and makes each piece unique

Certified STANDARD 100 by OEKO-TEX® N° CQ 1007/8, IFTH

To support sustainability, this product is no longer individually packaged - our stock is mixed

## Certifications:

STANDARD  
100

## Country Of Origin:

Bangladesh



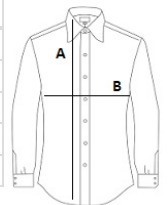
2025 : p. 113

2024 : p. 309



## SIZE SPECIFICATION (CM)

	S	M	L	XL	2XL	3XL	4XL
Pcs./	25	25	25	25	25	25	25
Body Length (A)	74	76	78	80	82	84	86
Chest Width (B)	51	54	57	60	63	66	69
Sleeve Length (C)	64	65	66	67	68	69	70
Neckline length	41	42	43	44	46	47	48



## COLORS:

☒ Beige
 ☒ Light Khaki
 ☒ Navy
 ☐ White