

## JC023 LONG SLEEVE ACTIVE T



**JustCool**  
AWDis

### MAIN FEATURES

- 135 g/m<sup>2</sup>
- 100% Recycled Polyester
- Relaxed fit
- Thumb holes
- Back waist zipped pocket
- Reflective tab detail
- Made out of 15 (550ml) plastic bottles
- AWDis' own Neoteric™ smooth recycled fabric with inherent wickability and quick drying properties
- Self-fabric crew neck
- Twin needle stitching detail
- Self-fabric taped back neck
- UPF 30+ UV protection

### Certifications:



### Country Of Origin:

Bangladesh

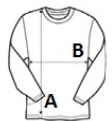
2025 : p. 315

2024 : p. 571



### SIZE SPECIFICATION (CM)

	S	M	L	XL	2XL
<b>Pcs./</b>	50	50	50	50	50
<b>Body Length (A)</b>	70	72.50	75	77.50	80
<b>Chest Width (B)</b>	48	51.50	55	58.50	62
<b>Sleeve Length (C)</b>	68	69	70	71	72



### COLORS:

Charcoal
  Electric Yellow
  French Navy
  Jet Black
  Royal Blue