

GIHF500 HAMMER ADULT HOODED SWEATSHIRT Outlet



MAIN FEATURES

- 305 g/m²
- 305.0 G/SqM
- 80% Combed Ring-Spun Cotton, 20% Polyester
- Yarn Count 31/1
- 100% Cotton face fabric
- Unlined 3 piece hood - 7.6 cm Centre panel
- Crossover hood opening with rib trim applied to edge
- Half-moon back patch
- Tear away label
- Rolled-forward shoulder
- Twin needle stitching at shoulder, armhole, neck, waistband, and cuffs
- Single-needle topstitched side seam
- Pouch pocket
- 1 x 1 rib with spandex
- 100% cotton thread on colour white

Suggested Decoration:

Embroidery

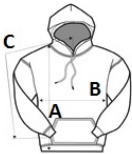
Country Of Origin:

El Salvador, Honduras



SIZE SPECIFICATION (CM)

| | S | M |
|-------------------|----|----|
| Pcs./ | 24 | 24 |
| Body Length (A) | 69 | 72 |
| Chest Width (B) | 51 | 56 |
| Sleeve Length (C) | 85 | 88 |



COLORS:

Graphite Heather