

BCSWT84 B&C SHARP SSL /WOMEN **Outlet** **New****MAIN FEATURES**

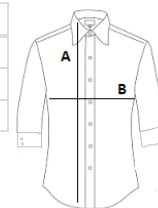
- 130 g/m<sup>2</sup>
- 100% cotton twill with Easy Care finish
- Soft feminine collar
- Cross stitched mother-of-pearl effect buttons
- Folded hem sleeves
- Darts at bustline & back panel for a feminine shape
- Horizontal last buttonhole
- Curved bottom hem

**Certifications:**STANDARD  
100**Country Of Origin:**

Bangladesh

**SIZE SPECIFICATION (CM)**

	4XL
Pcs./📦	10
Body Length (A)	72
Chest Width (B)	63

**COLORS:**

Dark Grey