

BCSWT83 B&C SHARP LSL /WOMEN **New****MAIN FEATURES**

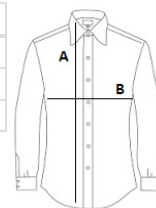
- 100% cotton twill with Easy Care finish
- Soft feminine collar
- Cross stitched mother-of-pearl effect buttons
- 2-button adjustable cuffs
 - a. Angular cuffs & thin square-gauntlets
 - b. Additional cufflink buttonholes
- Darts at bustline & back panel for a feminine shape
- Horizontal last buttonhole
- Curved bottom hem

Certifications:STANDARD
100**Country Of Origin:**

Bangladesh

**SIZE SPECIFICATION (CM)**

	XS	S	M	L	XL
Pcs./	10	10	10	10	10
Body Length (A)	65	66	67	68	69
Chest Width (B)	45,5	48	50,5	53	55,5

**COLORS:**

☒ Black
 ☒ Navy
 ☐ White