

BCSWO03 B&C OXFORD LSL /WOMEN**Outlet****MAIN FEATURES**135 g/m²

Cotton rich polycotton Oxford fabric with Easy Care finish

Soft feminine collar

Cross stitched mother-of-pearl effect buttons (except Oxford Blue: mother-of-pearl effect white buttons)

2-button adjustable cuffs

a. Rounded cuffs

b. Additional cufflink buttonholes

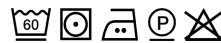
Darts at bustline & back panel for a feminine shape

Horizontal last buttonhole

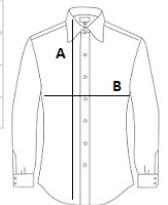
Curved bottom hem

Certifications:STANDARD
100**Country Of Origin:**

Bangladesh

**SIZE SPECIFICATION (CM)**

	XS	S
Pcs./	10	10
Body Length (A)	65	66
Chest Width (B)	45,5	48

**COLORS:**
☒ Silver Moon
 ☐ White