

BCSMP22 B&C BLACK TIE SSL /MEN **New**



MAIN FEATURES

- 135 g/m²
- Stretch poplin
- Cut-away collar
- Cross stitched mother-of-pearl effect buttons
- Folded hem sleeves
- Short modern back yoke
- Inside lap seams for perfect finish
- Shorter length - can be worn untucked
- Curved bottom hem
- Darts at back panel

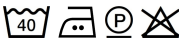
Certifications:



STANDARD
100

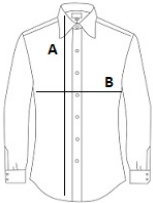
Country Of Origin:

Bangladesh



SIZE SPECIFICATION (CM)

	S	M
Pcs./📦	10	10
Body Length (A)	73	74
Chest Width (B)	36,5	37



COLORS:

- ☒ Luxurious Red
- ☐ White