

SO46800 SOL'S ROXY - WOMEN'S SOFTSHELL ZIPPED JACKET



MAIN FEATURES

- 340 g/m²
- Quality**
- 94% polyester, 6% elastane
 - 100% polyester polar fleece lining
 - 3 layers
 - 8000 mm waterproof breathable membrane
- Style**
- 2 zipped side pockets
 - 1 zipped chest pocket
 - Waist adjustable drawstring
 - Adjustable cuffs with self-gripping fastener
- Suggested Decoration:**
- Embroidery, Flex, Heat transfer, Screen printing
- Certifications:**



Country Of Origin:
China, Bangladesh

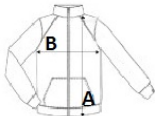


2025 : p. 273
2024 : p. 509



SIZE SPECIFICATION (CM)

	S	M	L	XL	2XL
Pcs./	10	10	10	10	10
Body Length (A)	63	65	67	69	71
Chest Width (B)	46	49	52	55	58



COLORS:

- Abyss Blue
- Army
- Bottle Green
- Charcoal Grey
- Dark Chocolate
- Green Absinthe
- Grey Melange
- Pepper Red
- Royal Blue
- Black
- White