



340 g/m²

Polyester / Elastane

Side seam

Washable at 40°C

2026 : p. 211
2025 : p. 273

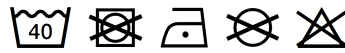
MAIN FEATURES:

Quality

- 94% polyester, 6% elastane
- 100% polyester polar fleece lining
- 3 layers
- 8000 mm waterproof breathable membrane

Style

- 2 zipped side pockets
- 1 zipped chest pocket
- Waist adjustable drawstring
- Adjustable cuffs with self-gripping fastener



TARIFF CODE: **61103099**

SUGGESTED DECORATION

Embroidery, Flex, Heat transfer, Screen printing

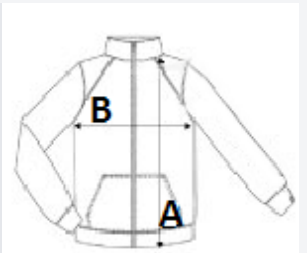
COUNTRY OF ORIGIN

China, Bangladesh



SIZE SPECIFICATION (CM)

	S	M	L	XL	2XL	3XL	4XL
Pcs./📦	10	10	10	10	10	10	10
Body Length (A)	69.00	71.00	73.00	75.00	77.00	79.00	81.00
Chest Width (B)	56.00	59.00	62.00	65.00	68.00	71.00	74.00



COLORS:

- Black
- Abyss Blue
- Dark Chocolate
- Bottle Green
- Green Absinthe
- Charcoal Grey
- Grey Melange
- Pepper Red