

RETRF624 TACTICAL HEIST HYBRID JACKET **Outlet**



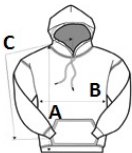
MAIN FEATURES

- 265 g/m²
- Fabric Information**
- 265gsm 85% polyester/13% viscose/2% elastane marl knit effect fleece
- Strategic durable ripstop panels
- Special Features**
- Grown on hood with adjusters
- 2 zipped lower and 1 zipped chest pocket
- Adjustable shockcord hem
- Made using recycled materials
- Suggested Decoration:**
- Embroidery, Heat transfer, Screen printing
- Country Of Origin:**
- China




SIZE SPECIFICATION (CM)

	S	M	L	XL	2XL	3XL
Pcs./	16	16	16	16	16	16
Body Length (A)	68	70,5	73	73	75,5	75,5
Chest Width (B)	51	55	59	63	68	72
Sleeve Length (C)	64	65	66	67	68	69



COLORS:

 Blue Wing Marl/Black