

RETRF603 THORNL Y MEN - FULL ZIP MARL FLEECE



SYMMETRY

MAIN FEATURES

- 220 g/m²
- Fabric Information**
- 100% polyester marl knit effect fleece
 - 220gsm 1 side anti-pill Symmetry fleece
 - Super soft handle
 - Quick drying
- Special Features**
- Chin guard
 - 2 zipped lower pockets
 - Self fabric cuffs
 - This product has no external logo branding
 - Made using recycled materials
- Country Of Origin:**
- Bangladesh

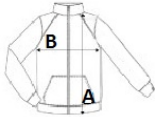


2024 : p. 489



SIZE SPECIFICATION (CM)

	S	M	L	XL	2XL	3XL
Pcs./	16	16	16	16	16	16
Body Length (A)	65	66	67	68	69	70
Chest Width (B)	52	56	60	64	69	73
Sleeve Length (C)	66	68.50	71	71	73.50	73.50



COLORS:

- Dark Khaki Marl
- Seal Grey Marl
- Navy Marl