

REGATTA
PROFESSIONAL



SOFTSHELL



260 g/m²

100% Polyester

Pocket

Tear-Away Label

MAIN FEATURES:

- Warm backed woven softshell
- Water repellent finish
- Conforms to EN ISO 20471:2013 +A1:2016 Class 2
- Orange colourway also conforms to RIS-3279/TOM
- 2 zipped lower pockets
- Angled ID Reflection chevrons show which way wearer is facing
- Inner zip and chin guard
- Max 25 Washes



TARIFF CODE: **62113310**

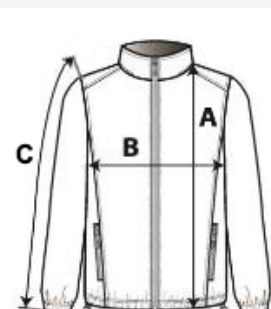
SUGGESTED DECORATION
Embroidery, Heat transfer, Screen printing

COUNTRY OF ORIGIN
China



SIZE SPECIFICATION (CM)

	S	M
Pcs./📦	16	16
Body Length (A)	68.00	70.50
Chest Width (B)	51.00	55.00
Sleeve Length (C)	66.00	67.00



COLORS:

Orange/Navy

Yellow/Navy