



350 g/m²

Polyester / Elastane

Pocket

MAIN FEATURES:

Fabric Information

94% Polyester 6% Elastane

High pile backed Softshell

Durable water repellent finish

Quick drying

Wind resistant

Special Features

Inner zip guard

2 zipped lower and 1 zipped chest pocket



Wash dark colours separately



TARIFF CODE: 62014010

SUGGESTED DECORATION

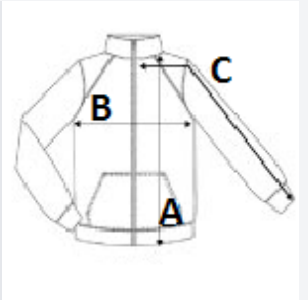
Embroidery, Heat transfer, Screen printing

COUNTRY OF ORIGIN

China

SIZE SPECIFICATION (CM)

| | S | M | L | XL | 2XL | 3XL |
|-------------------|-------|-------|-------|-------|--------|-------|
| Pcs./📦 | 12 | 12 | 12 | 12 | 12 | 12 |
| Body Length (A) | 71.00 | 73,5 | 76.00 | 76.00 | 78,5 | 78,5 |
| Chest Width (B) | 51.00 | 55.00 | 59.00 | 63.00 | 680.00 | 72.00 |
| Sleeve Length (C) | 79,5 | 81.00 | 82,5 | 84.00 | 85,5 | 87.00 |



COLORS:

■ Black

■ Iron