



**REGATTA**   
PROFESSIONAL

SOFTSHELL

WATERREPELLENT



290 g/m<sup>2</sup>

100% Polyester

Pocket

Tear-Away Label

MAIN FEATURES:

Fabric Information

Warm backed marl Softshell fabric

Atl durable water repellent finish

Special Features

2 zipped lower pockets

Adjustable shockcord hem



Wash dark colours separately



TARIFF CODE: **62014010**

SUGGESTED DECORATION

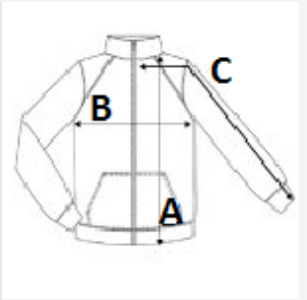
Embroidery, Heat transfer, Screen printing

COUNTRY OF ORIGIN

China

SIZE SPECIFICATION (CM)

	S	M	L	XL	2XL	3XL
Pcs./📦	16	16	16	16	16	16
Body Length (A)	66.00	68,5	71.00	71.00	73,5	73,5
Chest Width (B)	51.00	55.00	59.00	63.00	68.00	72.00
Sleeve Length / Outer (C)	66.00	67.00	68.00	69.00	70.00	71.00



COLORS:

■ Navy/Black

■ Seal Grey/Black