

REGATTA 
PROFESSIONAL

SOFTSHELL

WATERREPELLENT



270 g/m²

Polyester / Elastane

Pocket

Tear-Away Label

Washable at 40°C

2026 : p. 205
2025 : p. 248

MAIN FEATURES:

Fabric Information

- Warm backed woven stretch Softshell fabric
- Durable water repellent finish
- Wind resistant
- Super soft handle
- Quick drying

Special Features

- 2 zipped lower pockets
- Adjustable shockcord hem
- Made using recycled materials



Wash dark colours separately



TARIFF CODE: **62014010**

SUGGESTED DECORATION

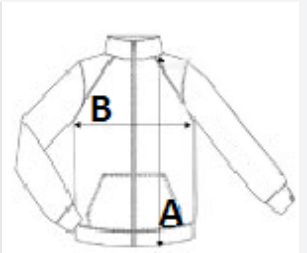
Embroidery, Heat transfer, Screen printing

COUNTRY OF ORIGIN

China

SIZE SPECIFICATION (CM)

	XS	S	M	L	XL	2XL	3XL	4XL
Pcs./📦	16	16	16	16	16	16	16	16
Body Length (A)	64.00	66.00	68.50	71.00	71.00	73.50	73.50	76.00
Chest Width (B)	49.00	50.00	54.00	58.00	62.00	67.00	71.00	75.00
Sleeve Length (C)	63.00	65.00	66.00	67.00	68.00	69.00	70.00	71.00



COLORS:

■ Black

■ Navy

■ Seal Grey/Black